



**SAILING INSTRUCTIONS**  
**WSVH Hoorn Class Event**  
**F18 class and**  
**WSV Hoorn Class Event F16 class**  
organised by **WSV Hoorn**  
under the auspices of the RNWA  
from 11<sup>th</sup> to 13<sup>rd</sup> June (inclusive) 2021  
location: Hoornse Hop, Hoorn

---

The notation '[NP]' in a rule means that a boat may not protest another boat for breaking that rule. This changes RRS 60.1(a).

**1. RULES**

- 1.1 The event is governed by the rules as defined in *The Racing Rules of Sailing (RRS)*.
- 1.2 All competitors and support persons must adhere to the corona rules of the Dutch government for the for the rules see <https://www.government.nl/topics/coronavirus-covid-19>.
- 1.3 [DP] Competitors and support persons shall comply with any reasonable request from an event official. Failure to comply may be misconduct. - Reasonable actions by event officials to implement COVID-19 guidance, protocols or legislation, even if they later prove to have been unnecessary, are not improper actions or omissions.

**2 CHANGES TO SAILING INSTRUCTIONS**

- 2.1 Any change to the sailing instructions will be posted before 0900 on the day it will take effect, except that any change to the schedule of races will be posted by 2000 on the day before it will take effect.
- 2.2 Changes to a sailing instruction may be made on the water by signals on the committee vessel "Voorzitter B".

**3 COMMUNICATIONS WITH COMPETITORS**

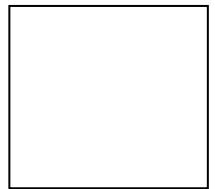
- 3.1 The online official notice board is located at [www.wsvh.nl](http://www.wsvh.nl) and there will be a Whatsapp Group where the committee will do the notices.
- 3.2 The race office is located at [Julianapark 1; 1621 MR Hoorn.](https://www.wsvh.nl/locatie/) +31 229 213 540;

**4 [DP] CODE OF CONDUCT**

- 4.1 Competitors and support persons shall comply with reasonable requests from race officials.
- 4.2 Competitors and support persons shall handle any equipment -or place advertising provided by the organizing authority with care, seamanship, in accordance with any instructions for its use and without interfering with its functionality.

**5 SIGNALS MADE ASHORE**

- 5.1 Signals made ashore will be displayed at a committee vessel at the launch area.
- 5.2 When flag AP ■ ■ ■ is displayed ashore, '1 minute' is replaced with 'not less than 60 minutes' in the race signal AP.



## 6 SCHEDULE OF RACES

### 6.1

Date:	Class: F18	Class: F16
Friday 11 June	4 races	
Saturday 12 June	4 races	4 races
Sunday 13 June	4 races	4 races

6.2 One extra race per day may be sailed, provided that no class becomes more than one race ahead of schedule and the change is made according to SI 2.1.

6.3 The scheduled time of the warning signal for the first race each day is

Date:	Class: F18	Class: F16
Friday 11 June	12:25	
Saturday 12 June	10:55	10:55
Sunday 13 June	10:55	10:55

6.4 To alert boats that a race or sequence of races will begin soon, the orange starting line flag will be displayed with one sound at least five minutes before a warning signal is made.

6.5 On the last scheduled day of racing no warning signal will be made after 15:00.

## 7 CLASS FLAGS

7.1 The Class flags are: the Red Flag for both classes

## 8 RACING AREA

8.1 Addendum A shows the location of the racing area.

## 9 COURSES

9.1 The diagram(s) in SI Addendum B show(s) the courses, including the approximate angles between legs, the order in which marks are to be passed, and the side on which each mark is to be left.

9.2 No later than the warning signal, the race committee vessel will display the approximate compass bearing of the first leg and the course number on a white board with roman numerals.

9.3 Legs of the course will not be changed after the preparatory signal. This changes RRS 33.

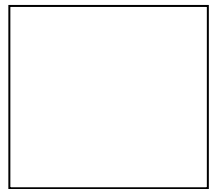
## 10 MARKS

10.1 Marks of the course are orange buoys.

10.2 New marks, as provided in SI 13.1, will be green buoys.

10.3 The starting marks will be a buoy with staff displaying an orange flag and a staff displaying an orange flag on the committee vessel with club flag WSV Hoorn

10.4 The finishing marks will be a buoy with staff displaying a blue flag and a staff displaying a blue flag on the committee vessel.



**10.5** A race committee vessel signaling a change of a leg of the course is a mark as provided in SI 13.2.

**11 Spare**

**12 THE START**

**12.1** The starting line is between a staff displaying an orange flag on the committee vessel at the starboard end and a buoy with staff displaying an orange flag at the port end.

**12.2** A boat that does not start within 4 minutes after her starting signal will be scored Did Not Start without a hearing. This changes RRS A5.1 and A5.2.

**13 CHANGE OF THE NEXT LEG OF THE COURSE**

**13.1** To change the next leg of the course, the race committee will lay a new mark or move the finishing line and remove the original mark as soon as practicable. When in a subsequent change a new mark is replaced, it will be replaced by an original mark.

**13.2** Except at a gate, boats shall pass between the race committee vessel signalling the change of the next leg and the nearby mark, leaving the mark to port and the race committee vessel to starboard. This changes RRS 28.

**14 THE FINISH**

**14.1** The finishing line will be between a staff displaying a blue flag on the committee vessel at the starboard end and a buoy with staff displaying a blue flag at the port end.

**15 PENALTY SYSTEM**

**15.1** An international jury is appointed as provided in RRS 70.5.

**16 TIME LIMITS [AND TARGET TIMES]**

**16.1** The Mark 1 Time Limit, Race Time Limit (see RRS 35), and the Finishing Window are shown in the table below.

Mark 1 Time Limit	Race Time Limit	Finishing Window
20 Minutes	60 Minutes	20 Minutes

**16.2** If no boat has passed Mark 1 within the Mark 1 time limit the race will be abandoned.

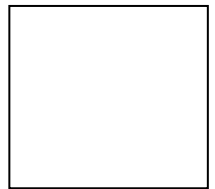
**16.3** The Finishing Window is the time for boats to finish after the first boat sails the course and finishes. Boats failing to finish within the Finishing Window, and not subsequently retiring, penalized or given redress, will be scored Time Limit Expired (TLE) without a hearing. A boat scored TLE shall be scored points for the finishing place [one][two] more than the points scored by the last boat that finished within the Finishing Window. This changes RRS 35, A5.1, A5.2 and A10.

**16.4** Failure to meet the target time will not be grounds for redress. This changes RRS 62.1(a).

**17 HEARING REQUESTS**

**17.1** For each class, the protest time limit is 60 minutes after the last boat [in that class] finishes the last race of the day or the race committee signals no more racing today, whichever is later. The time will be posted on the official notice board.

**17.2** Hearing request forms are available from the starting Vessel at the launch area -



- 17.3** Notices will be posted no later than 30 minutes after the protest time limit to inform competitors of hearings in which they are parties or named as witnesses. Hearings will be held in the protest room, located at Julianapark 1; 1621 MR in Hoorn. : [www.wsvh.nl/locatie/](http://www.wsvh.nl/locatie/), beginning at the time posted in the Whatsappgroup
- 17.4** An international jury is appointed. Decisions of the international jury will be final as provided in RRS 70.5.

## **18 [NP][DP] SAFETY REGULATIONS**

- 18.1 [DP]** A boat that retires from a race shall notify the race committee at the first reasonable opportunity.

## **19 REPLACEMENT OF CREW OR EQUIPMENT**

- 19.1** Substitution of competitors will not be allowed without prior written approval of the race committee Replacement of the responsible person is not allowed.

## **20 EQUIPMENT CHECKS AND MEASUREMENT CHECKS**

- 20.1** A boat or equipment may be inspected at any time for compliance with the class rules, notice of race and sailing instructions.
- 20.2 [DP]** When instructed by a race official on the water, a boat shall proceed to a designated area for inspection.

## **21 Spare**

## **22 OFFICIAL VESSELS**

- 22.1** Official vessels will be identified as follows: white flag with "RC"

## **23 [DP] SUPPORT TEAMS**

- 23.1** Team leaders, coaches and other support persons shall stay outside areas where boats are racing from the time of the preparatory signal for the first start until all boats have finished or retired or the race committee signals a postponement, general recall or abandonment.

## **24 TRASH DISPOSAL**

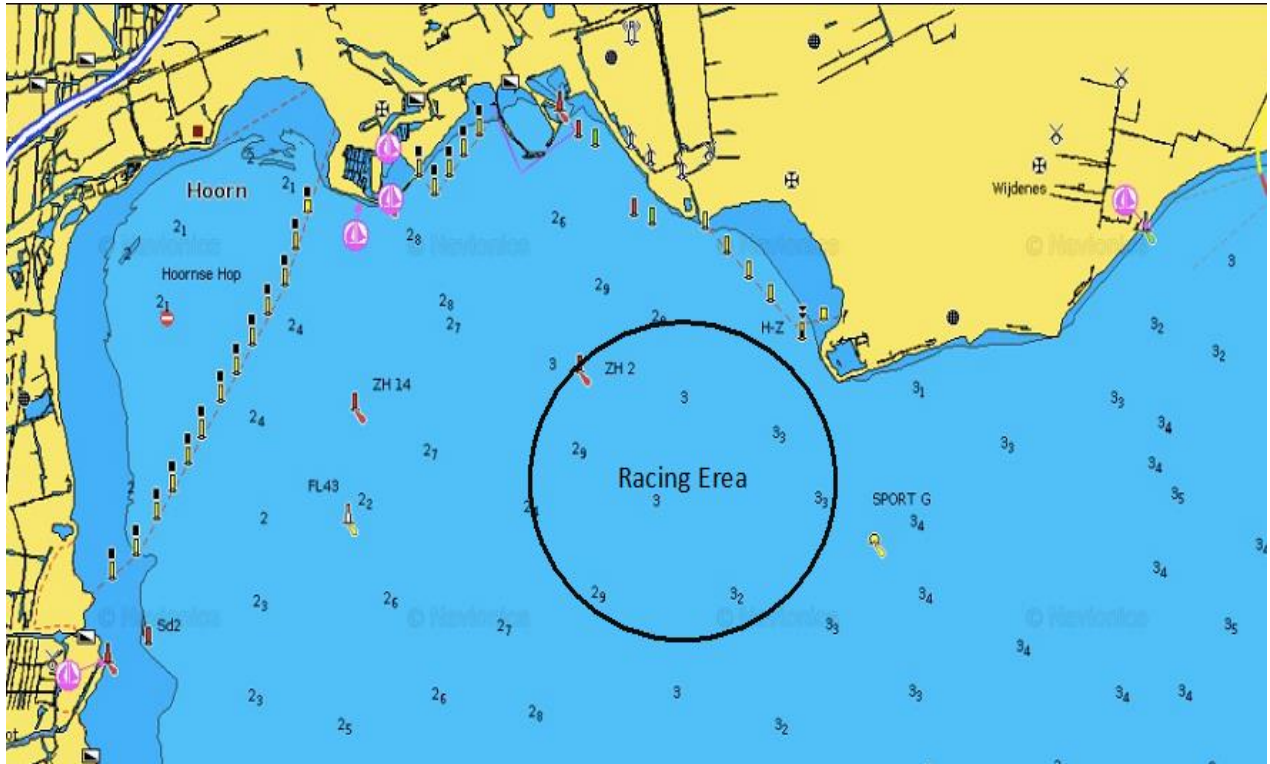
- 24.1** Trash may be placed aboard official boats.

## **25 ORGANISATION**

The race officer is : Allert Mastenbroek  
The chairman of the protest committee is : Henry Sleutel  
The second member of the protest committee is: Henk Plaatje



**ADDENDUM A**





**ADDENDUM B**

**Course I : Start-1p-2p-3s/p-1p-2p-3p-Finish**

**Course II: Start-1p-2p-3s/p-1p-2p-3s/p-1p-2p-3p- Finish**

